



**AUTOMATIC  
DOOR AND  
HARDWARE**

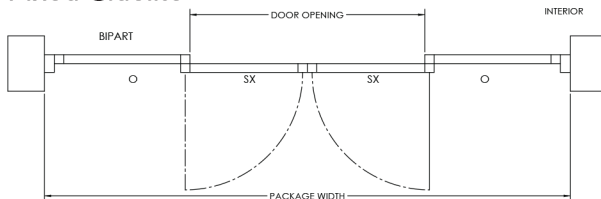
# Maverick Belt Slide Commercial Pedestrian Automatic Door System

## Configurations

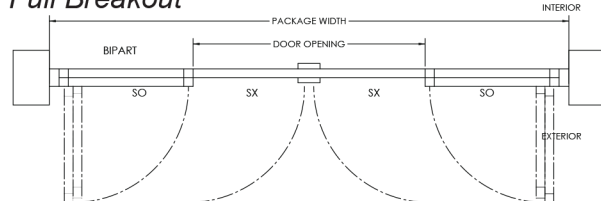


*Bi-Part Slide*

*Fixed Sidelite*



*Full Breakout*



*See Below For Specifications*

## Features

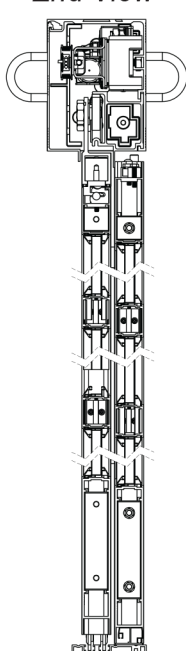
All models available in bi-part (double sliding) or single slide configurations.

**BREAKOUT:** (System is disabled when panels breakout)

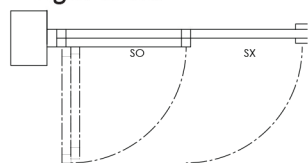
- Reinforced Timing Belt
- Maximum Panel Weight - Up to 220 lb per leaf
- Door Panels: Aluminum Color
- Speed Range: (based on size & weight of the door)
- Clear Door Opening Typical Width: 3' - 6'

Door packages are custom built to fit your job requirements.

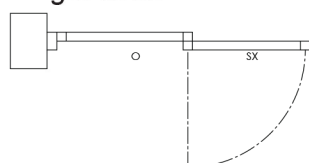
*End View*



*Full Breakout  
Single Slide*



*Fixed Sidelite  
Single Slide*



### SPECIFICATIONS:

HEADER SIZE: 8" (203mm) high x 6" (152mm) deep

TYPICAL HEIGHT: 7'-8" (2.3m)

TYPICAL WIDTH: Single Slide: 7' to 9' (2.1m to 2.7m)  
Bi-Part: 10' to 14' (3m to 4.2m)

TYPICAL DOOR PANEL WEIGHT: Up to 220 pounds each (100kg)

DRIVE TRAIN: Molded brushed DC One Motor with gear reduction assembly

CONTROL: Microprocessor controller

SENSORS: Microwave doppler radar for motion; and active infrared with background analysis for presence

BREAKOUT: SX panel on the fixed sidelite, SX and SO panels on the full breakout

POWER INPUT: 120 VAC, Single Phase

POWER CONSUMPTION: 150W Max

CODE COMPLIANCE: ANSI A156.10

OPERATING ENVIRONMENT: -4F to 158F (-20C to +70C) 30% to 85% relative humidity